

THE SCOOP



Independence County Conservation District

(LOCAL GOVERNMENT AT WORK MANAGING SOIL AND WATER RESOURCES)

Authorized by Act No. 197 of the General Assembly of 1937



Volume 23 Issue 2

Board of Directors:

Eddie Wagoner, Chairman; Parmer Hankins, Vice Chairman; Deborah Stroud, Board Member; Julia Nail, Sec/Tres; Tom Vanenburg, Board Member

District Staff: Ricki Gilbert, Secretary; Brianne Reed District Technician; Casey Wood, Water Quality Technician
NRCS District Conservationist: ; Soil Conservationist: Carissa Craig

FFA WORKSHOP

MARCH/APRIL
2016

The Conservation District conducted a FFA Judging Workshop on February 18, 2016 at the U of A Livestock and Forestry Experiment Station near Bethesda. There were 17 schools in attendance. These schools were Batesville, Cave City, Mountain Home, Cedar Ridge, Midland, Sloan-Hendrix, Ashdown, Jackson Co., ICC, Salem, GCT, Melbourne, Concord, Newport, Bakersfield, Mo, and Viola.

The workshop was conducted to help the students get ready for the competitions at the district and state level. The judging contest offered at the workshop included Livestock, Land, Poultry, and Forestry. There were 250 participants from the different schools and this includes the instructors/helpers.

We are very proud to say the workshop was a great success and would not have been possible without the participants and the following sponsors:

Citizens Bank
First Community Bank
Arkansas Forestry Commission
University of Arkansas Livestock and Forestry Experiment Station
Cooperative Extension Service

Without their support we would not be able to provide hot food and drinks to the students and instruction in the different areas of study.

Inside this issue:

Irrigation meeting	2
Chainsaw workshop	3
Water Registration	4
For sale or rent	4
Newsletter Sponsors	5



IRRIGATION MEETING

On February 23, Independence County Conservation District held an irrigation meeting at the community center in Oil Trough. With the cost of diesel and farming going up, several producers wanting to know the advantages of irrigation.

The meeting started with Tanner Johnston, Craighead County District Conservationist welcomed all those present and thanked the sponsors for their support. He also told the producers present about Independence County Conservation District's flow meter that they are purchasing for producers to use to flow their wells.

The first speaker of the day was Charlotte Bowie, Natural Resources Conservation Service (NRCS) State Irrigation Engineer. She spoke about the different management practices and irrigation practices that NRCS has that producers can apply for. Ms. Bowie told some of the benefits of these practices compared to others.

Tim Smith was next on the agenda. He talked about the use of cover crops and how it helped with irrigation. By using cover crops the producers can reduce the input of fertilizers and how they water which save money.

Due to the threat of rain the agenda was changed and Jeremy Huff, Natural Resources State Land Specialist, took us outside to the rainfall simulator. In the simulator we had four types of soil there was no-till farm land, conventional tilled ground, no-tilled pasture ground, and conventional tilled pasture. What the simulator does is take these different types of soil and simulates rain fall on them. The no-till ground absorbed the rain at a much faster rate than the conventional tilled ground. In showing this we learned the no-till method will allow for better absorption of the water where the conventional till not only does not absorb the water but loses soil to the wash off of the water. In the no-till ground Tanner Johnston stated there were more earth worms and healthy vegetation needed in the dirt than the conventional till ground.

Last on the agenda was Mike Hamilton, University of Arkansas, he talked to the producers about side inlet and using the pipe planner app. The information that you input into pipe planner will give you where the hole for irrigating a field should be placed and the size of the hole also. Mr. Hamilton showed producer how to sign up on the site and get started.

The meeting concluded with lunch at Sissy's Café in Oil Trough. The Independence County Conservation District wishes to thank the speakers for attending and sharing their knowledge with our producers. The meeting was sponsored by Independence County Conservation District, Arkansas Natural Resources Commission, NRCS, and U of A Corporative Extension Service. Watch for future meetings on irrigation.



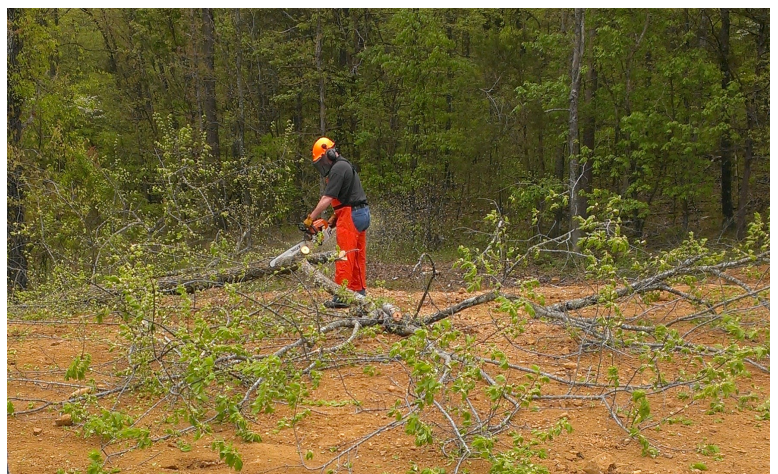
Chainsaw Workshop & In-Woods Rescue

In partnership with the Rural Fire Protection Program, Powered By STIHL®, Independence County Conservation District, Pilgrims Rest Baptist Church, and Blair & Stroud Attorney at Law hosted a chainsaw safety and in-woods rescue workshop. The informative two day workshop benefited volunteer fire departments, county workers, state workers, and anyone wanting to know how to operate a chainsaw or rescue people in the woods for several different counties with a two day total of 32 participants. The instructor was Dana Hinkley, from Berlin, New Hampshire. Dana has instructed numerous safety workshops in Arkansas and across the nation since 2001. Both programs were approved by the Arkansas Fire Academy for 8 hours of Certified Training credit.

On the 14th of April the chainsaw safety portion, participants learned about the different protective gear and the proper way to apply it to be most effective. They also learned the proper techniques used to sharpen & maintain a chainsaw. Then the participants observed the techniques that Dana Hinkley recommends when felling a tree. The objective of this workshop was to inform the participants the proper way to use their chainsaw, safety equipment needed, and the best way to fell a tree.

On the 15th of April, the In-Woods Rescue portion of the workshop covered communications, legalities, incident command, types of injuries, mechanism of injury, safety, & scene control. Techniques in using a skiff to carry an injured person and practicing how to lift, move, and successfully maneuver the skiff and injured person in the woods. Dana Hinkley also stressed how important keeping everyone in two lines behind the person being carried and two people in front to clear the path was.

We wish to say thank you to the Rural Fire Protection Program, STIHL, Dana Hinkley, and Pilgrims Rest Baptist Church for letting us host this workshop in Independence County. Also, we would like to thank Charles Gangluff with the Rural Fire Protection Program for all of his work in putting together the workshop. Luncheon for both days of the workshop was sponsored by Blair & Stroud Attorneys at Law of Batesville and the Independence County Conservation District.



WATER USAGE REGISTRATION

October 2015 – March 1, 2016

All persons who withdrew ground water and/or diverted surface water, **except for domestic purposes, must report their 2015 usage by 3/1/2016.**

Act 154 of 1991 requires all users of ground and surface water to be assessed an annual water use fee in the amount of \$10 per registered well and/or relift site. These fees are required for all non-exempt wells or relift sites including any idle wells or relift sites.

Note: When registered a pre-existing well or relift site for the first time, there is a one-time waiver of any penalties for non-compliance for the prior years. However, the old well or relift site will have the same status of a new well for allocation purposes.

Act 81 of 1957, as amended, empowers the Arkansas Natural Resources Commission (ANRC) to make allocations among users of surface water during periods of water shortage. Information gained from water use registration will be utilized in allocation actions and as a basis for determining the State's overall water usage and water needs.

Wells and relifts should be registered in the county were the wells are located.

Conservation District License Plate

Here is a way to show your "Love for the Land". Purchase this specialty license plate at your revenue department and support your local

Conservation District. The cost is \$35 for the plate and \$20 of that goes to the Conservation District

Thank you to those who have purchased the license plate and helped support the Conservation District.



Equipment for Rent

Hay Buster 107 No-Till Drill \$10.00/ac
Native Grass Seeder \$15.00/day



12' Rotowiper \$25.00/day
300 Gallon Sprayer \$25.00/day

Materials For Sale

Topography Maps		\$ 9.00
County Maps	18 X 30	\$ 2.00
	3' X 5'	\$ 3.00
Surveying Flags		\$10.00
Soil Survey Manuals		Free
Conservation Literature		Free

For more information on these products call the Independence County Conservation District at 870-793-4164 ext. 3 or visit our website at www.independencecccd.com

Filter Fabric is a geo textile material used to allow water to pass through the aggregate and keep the underlying soil separate.

Used in the heavy use areas of NRCS program. For Sale in 15' X 15' sections for \$55

Jobe Mega Flow valves are used in several different types of watering systems. When attached in the tank, side mount or bottom mount, the float will allow automatic increase in water level when the level drops lower than desired. We have two different sizes of valves ¾" and 1" for \$50

If you would like to order either item call the Independence County Conservation District at 870-793-4164 ext. 3 or email ricki.gilbert@ar.nacdnet.net with your order and contact information and we will get in touch with you.



Independence County Conservation District

490 E. College Street, Room 242
Batesville, AR 72501

Phone: 870-793-4164 ext. 3

Fax: 855-652-2088

Email: ricki.gilbert@ar.nacdnet.net
brianne.reed@ar.nacdnet.net

MISSION STATEMENT

The Independence County Conservation District provides the grassroots leadership necessary for the county's soil, water, and related resources.

Our District serves local people through a partnership and close-working relationship with state and federal conservation agencies working to address local resource-related concerns by encouraging and guiding local initiatives.

NEWSLETTER SPONSORS

Rocky Point Materials

Crushed Limestone Aggregates

Rip Rap, Dump Trucking &

Excavating services

Phone: 870-251-3132

Kenny Staggs Cell: 870-613-2321



Phone: 870-793-7572

805 Neeley Street

BATESVILLE, AR 72503-2034



Advertise with us. Your ad
will be sent out to over 1100
customers.



AG-LIME • INDUSTRIAL STONE • CRUSHED
AGGREGATES

6-MESH FERTILIZER FILLER

MIDWEST LIME COMPANY

P.O. BOX 2608

BATESVILLE, AR 72503

PHONE: (870) 793-2317

North Arkansas Farm Supply, Inc.

FARMERS COOPERATIVE

FEED • SEED • FERTILIZER

HORSE SUPPLY & TACK

Highway 167 North

Batesville, AR 72501

870-793-3852

CO-OP

Billy Doyle, Manager



CITIZENS BANK

870-793-4441



255 E. College St. • Batesville

870-698-9044 • 800-572-8165

www.agheritagefcs.com

"Homes, Farms, Acreage..."

We Do It All

JOHN DEERE

Williams Equipment Co.

Highway 25 N., P.O. Box 3963

Batesville, AR 72503

Bus. Phone: 870-793-4133

Email: Bill@williamsfarmequipment.com

Batesville Poultry Equipment, Inc.

1401 White Drive – P.O. Box 2491

Batesville, AR 72503-2491

1-870-793-7855

Metal & Plastic Pipes and Culverts

Metal for buildings

New Construction – Sheds, Barns, Shops, Stack-
ing Sheds, Composters, etc...



INDEPENDENCE/JACKSON COUNTY

CATTELMEN'S ASSOCIATION

100 WEST EXPERIMENT STATION ROAD

BATESVILLE, AR 72501

**WORKING TOGETHER TO ADVANCE THE
BEEF CATTLE INDUSTRY**

Membership Info, contact:

John Tucker

870-307-530

FIRST COMMUNITY BANK

Member FDIC

Where community comes first.

BATESVILLE • SOUTHSIDE • CAVE CITY CHEROKEE
VILLAGE/HIGHLAND • MOUNTAIN HOME SEARCY •
BALD KNOB • CABOT
www.firstcommunity.net